

**UT** 友派金属  
*Upi Metal Products*



# **METALWORKING EXPERTS**

**Get the complete solution for your  
metal parts and products**

*2025-English*



SHANTOU UPI METAL PRODUCTS CO., LTD.



Welcome to Upi, a leading factory located in Guangdong, China's manufacturing hub. Since our establishment in 2002, we have been committed to continuous development. Today, our services encompass Stamping, Sheet Metal fabrication, CNC machining, and Die Casting.

Our team of experienced engineers is at your service, ready to provide you with rapid, free design and optimized solutions for your Metal Parts and Metal Products. We pride ourselves on our cutting-edge technology development, production, and quality control capabilities, ensuring you receive exceptional metal part Customization services and OEM and ODM services for metal products.

# ABOUT





As a leading metal parts and metal product manufacturer, we are committed to delivering top-notch quality and serving clients across the globe.

Our core values being professionalism, focus, quality, and affordability.

We uphold the principles of honesty, lawfulness, excellence, and mutual benefit in all our business endeavors.

Our mission is to provide every customer with high-quality and affordable products, striving for the best balance between quality, design, and price.

# MISSION AND VALUES





# MOLD

Our mold department designs and manufactures molds for stamping and die-casting processes.

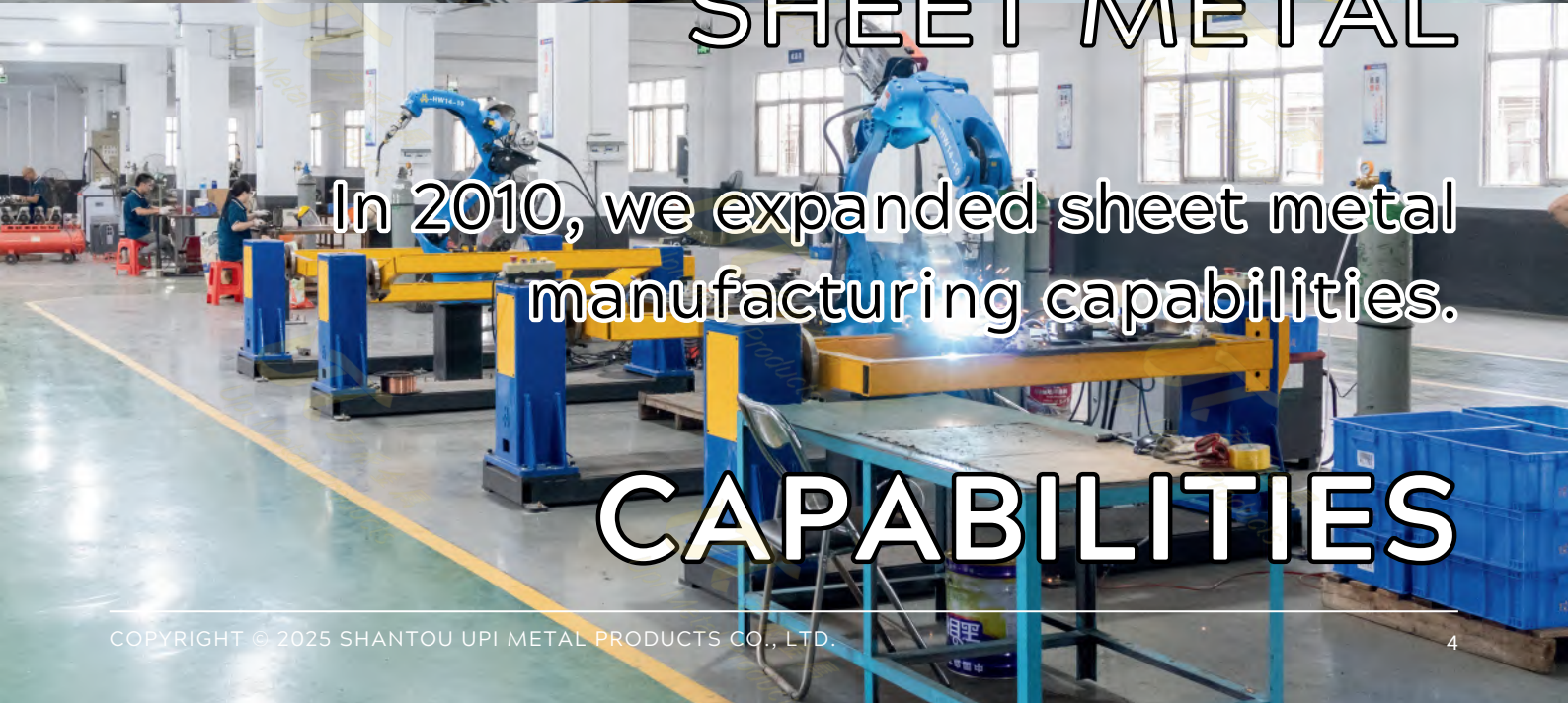


# STAMPING

We founded our factory in 2002, focused on stamping production.

# CAPABILITIES





# SHEET METAL

In 2010, we expanded sheet metal manufacturing capabilities.

# CAPABILITIES





## CNC

Expanding our reach in advanced manufacturing, we established a CNC production department in 2013.



## DIE CASTING

In 2014, we acquired die casting equipment and increased the die casting department.

## CAPABILITIES



Vickers Hardness Tester.  
Rockwell Hardness Tester.  
Coordinate Measuring Machine.  
Vision Measuring Machine.  
Surface Roughness Tester.  
Run-Out Instrument.  
Color Difference Meter, etc.

**RoHS REACH CE FDA**

**QUALITY ASSURANCE**



# BICYCLE

## Modification Accessories

### MTB

Material: Aluminum Alloy.  
Process: CNC | Extrusion | Forging.  
Surface: Anodized.  
Color: Customized.



### Pedelec

Material: Aluminum Alloy.  
Process: CNC | Extrusion | Forging.  
Surface: Anodized.  
Color: Customized.



### MTB Disc Brake

Material: Aluminum Alloy.  
Process: Laser Cutting | CNC.  
Surface: Anodized | PVD.  
Color: Customized.



### Foldable Bicycle

Material: Aluminum Alloy|Stainless steel.  
Process: CNC | Extrusion.  
Surface: Anodized | PVD | Electrolysis.  
Color: Customized.

# METAL PARTS SOLUTIONS



# MOTORBIKE

## Modification Accessories



### MATERIAL

Aluminum Alloy.  
Titanium Alloy.



### PROCESS

Aluminum Extrusion.  
Forging.  
CNC.



### SURFACE

Anodizing.  
PVD.

# METAL PARTS SOLUTIONS



# FISHING REEL



## Fishing Reel

Material: Aluminum Alloy | Titanium alloy.  
Process: CNC | Extrusion | Forging.  
Surface: Anodized | PVD.  
Color: Customized.



## Swing Arm

Material: Aluminum Alloy | Titanium alloy | Carbon Fiber.  
Process: CNC | Extrusion | Forging.  
Surface: Anodized | PVD.  
Color: Customized.



## Fishing Line Spool

Material: Aluminum Alloy | Stainless steel.  
Process: CNC | Extrusion | Forging.  
Surface: Anodized | PVD.  
Color: Customized.



## Balancing Pole

Material: Aluminum Alloy | Titanium alloy.  
Process: CNC | Extrusion | Forging.  
Surface: Anodized | PVD.  
Color: Customized.

# METAL PARTS SOLUTIONS





## GUILLOCHÉ DIAL

Material: Copper.  
Process: CNC.  
Surface: Spray paint | PVD.  
Color: Customized.



## COMPONENT

Material: Copper | Aluminum Alloy |  
Stainless Steel.  
Process: CNC | Forging | Die Casting  
Surface: PVD | Plating | Painting |  
Electrolysis | Anodizing.  
Color: Customized.



## ROTOR

Material: Copper | WNiCu.  
Process: CNC.  
Surface: Spray paint | PVD.  
Color: Customized.

# METAL PARTS SOLUTIONS



# SMOKING



## HOOKAH

Material: Stainless Steel.  
Process: CNC.  
Surface: Electrolysis | PVD.  
Color: Customized.



## DRY HERB VAPORIZERS

Material: Zinc Alloy.  
Process: Die Casting.  
Surface: PVD.  
Color: Customized.



## E-CIGARETTE

Material: Aluminum Alloy.  
Process: Aluminum Extrusion | CNC.  
Surface: Anodizing | Spray Painting.  
Color: Customized.

# METAL PARTS SOLUTIONS



# AUDIO EQUIPMENT



## HIFI SOCKET PANEL

Material: Aluminum Alloy | Copper.

Process: CNC.

Surface: Anodized | Mirror Polished.

Color: Customized.

## SPEAKER GRILLE

Material: Aluminum Alloy | SPCC |  
Stainless Steel.

Process: Stamping | Etching.

Surface: Eletrophoresis | Spray Painting |  
Powder Coating | Anodizing |  
Pad Printing.

Color: Customized.



## ROTARY KNOB

Material: Aluminum Alloy|Stainless Steel.

Process: CNC.

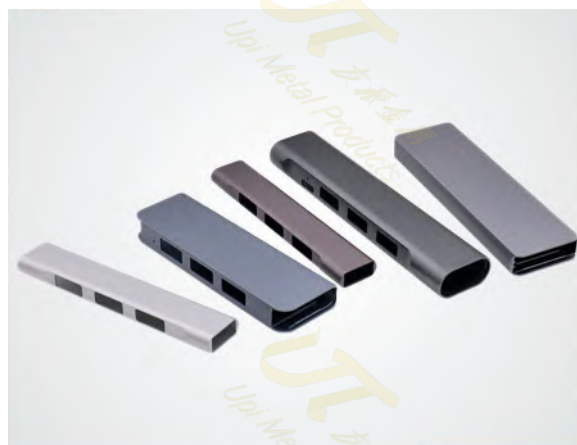
Surface: Anodized | Electrolysis.

Color: Customized.

# METAL PARTS SOLUTIONS



# ALUMINUM SHELL



Material: Aluminum Alloy.

Process: Extrusion | CNC.

Surface: Anodized.

Color: Customized.

## METAL PARTS SOLUTIONS



# COFFEE MACHINE



## Coffee Bean Grinder

Material: Stainless Steel.  
Process: CNC.  
Surface: Electrolysis | PVD  
Color: Customized.



## Coffee Capsules

Material: Stainless Steel.  
Process: CNC.  
Surface: Electrolysis | PVD.  
Color: Customized.



## Coffee Machine

Material: Stainless Steel | Aluminum.  
Process: Precision casting | CNC | Stamping | Welding.  
Surface: Electrolysis | PVD | Polished | Anodized.  
Color: Customize.



# METAL PARTS SOLUTIONS



# PRECISION PARTS

Mechanical & Medical Equipment Parts



## PRECISION PARTS

Material: Stainless Steel.  
Process: CNC.  
Surface: Electrolysis | PVD |  
Tungsten Disulfide (WS2) | DLC



## LEAD SCREW & NUT

Material: Stainless Steel | Copper |  
PEEK | igus J  
Process: Thread Rolling Process | CNC.  
Surface: Electrolysis | PVD |  
Tungsten Disulfide (WS2) | DLC

# METAL PARTS SOLUTIONS



## HOOKAH



At Upi, we bring years of experience in designing and manufacturing hookah metal parts. Our expertise in metalworking and robust supply chain enable us to offer one-stop OEM and ODM services for customized Hookah Set.

# METAL PRODUCTS SOLUTIONS



# COFFEE BREWING TOOLS



COFFEE DISTRIBUTOR



PORTAFILTER HANDLES



COFFEE CAPSULE



COFFEE GRINDER

*Leveraging our extensive metalworking expertise, Upi delivers exceptional OEM and ODM services for coffee brewing tools. Our unrivaled craftsmanship and design expertise ensure the finest coffee brewing experiences.*

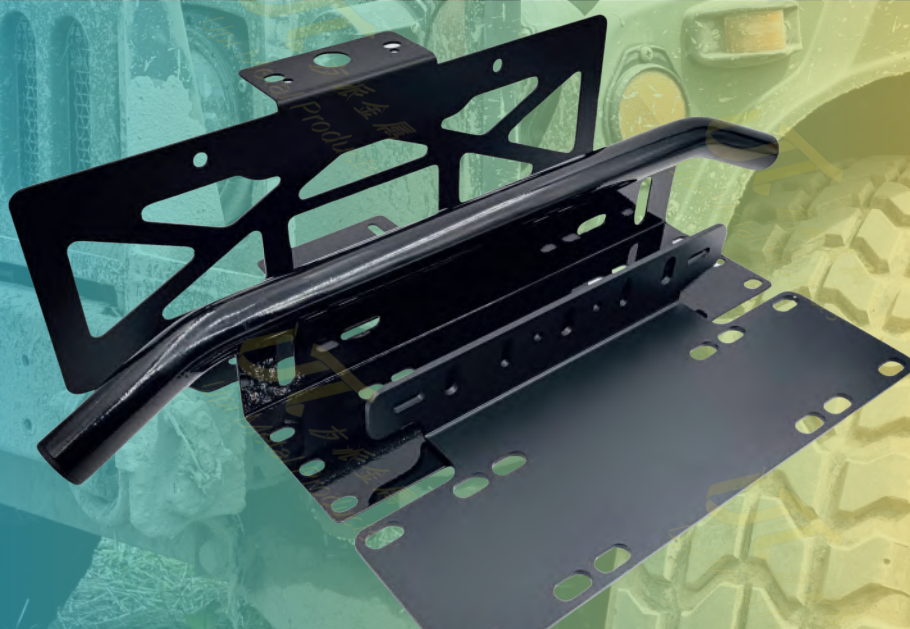
## METAL PRODUCTS SOLUTIONS



# OFF-ROAD VEHICLE



LED LIGHT BAR MOUNTING BRACKET



LICENSE PLATE HOLDER

MATERIAL: ALUMINUM ALLOY | SPCC | STAINLESS STEEL.  
PROCESS: LASER CUTTING | SHEET METAL | WELDING.  
SURFACE: ELECTROPHORESIS | ANODIZING | SPRAY PAINTING | POWDER COATING.  
COLOR: CUSTOMIZED.

## METAL PRODUCTS SOLUTIONS



# E-DEVICE STANDS

**OEM and ODM services for high-quality E-Device Stands.**



**PHONE STANDS**



**TABLET STANDS**

**Impeccably crafted stands: Where function meets style.**

**Cater to a wide range of devices and usage scenarios.**



**LAPTOP STANDS**

**METAL PRODUCTS SOLUTIONS**



## CHASSIS

Upi's sheet metal and CNC divisions collaborate seamlessly to deliver expertly crafted metal enclosures for your digital products. From audio equipment to computer servers and industrial control systems, we offer the perfect solution to meet your specific needs.



AMPLIFIER



COMPUTER



POWER CONDITIONERS

# METAL PRODUCTS SOLUTIONS



# FAQ

**Q: What information do I need to request a quote from Upi?**

**A: Drawings | Material | Hardness | Surface treatment | Tolerances | Quality Standards | Quantity.**

**Q: Samples free of charge?**

**A: 1. Ready-made samples that meet the requirements, they are free of charge, but shipping costs apply.**

**2. For customized samples, we charge for the sample and shipping costs and refund the sample cost when you place your order.**

**Q: What is Upi's quotation method?**

**A: We usually provide quotes based on EXW, FOB, CIF, DDU and DDP terms.**

**Q: How long is the quotation lead time for Upi?**

**A: 24~48hours.**

**Q: What is the production time for my order?**

**A: We will provide an estimated production lead time in the quotation.**

**Q: How does Upi guarantee quality?**

**A: We possess multiple measuring devices to fulfill the dimension and performance testing requirements of our products.**

**Q: What after-sales service does Upi offer?**

**A: If there are quality issues with our parts or products, we promise to provide free rework, exchange, or refund for returned goods.**

**Q: How does Upi protect trade secrets?**

**A: We rigorously uphold the terms of the confidentiality agreement, and any breaches will result in legal consequences.**

**Q: How can I verify Upi's reliability?**

**A: We welcome you to visit our factory.**



# TOGETHER



## LET'S WORK TOGETHER TO CREATE SOMETHING GREAT



# CONTACT US WE ARE YOUR PARTNER IN SUCCESS



Shantou Upi Metal Products Co., Ltd.

**Mobile|WhatsApp|WeChat:** +86 15889258060

**Email:** Zach@upimetal.com

**Website:** <https://www.upimetal.com>

**Head Office | Production Site 1:** No.29 Anhua Road, Chenghua Street,  
Chenghai District, Shantou City, Guangdong Province, China

**Production Site 2:** No. 3, North Second Street, Xiangmang West Road,  
Dongguan City, Guangdong Province, China

